

WHAT DOES MANNA MEAN?



MANNA Joint Doctoral project is a Marie-Skłodowska Curie Innovative Training Network funded by the European Commission under the Horizon 2020 Programme

**Our new website will be soon online!
You will find: articles, interviews and much more!**

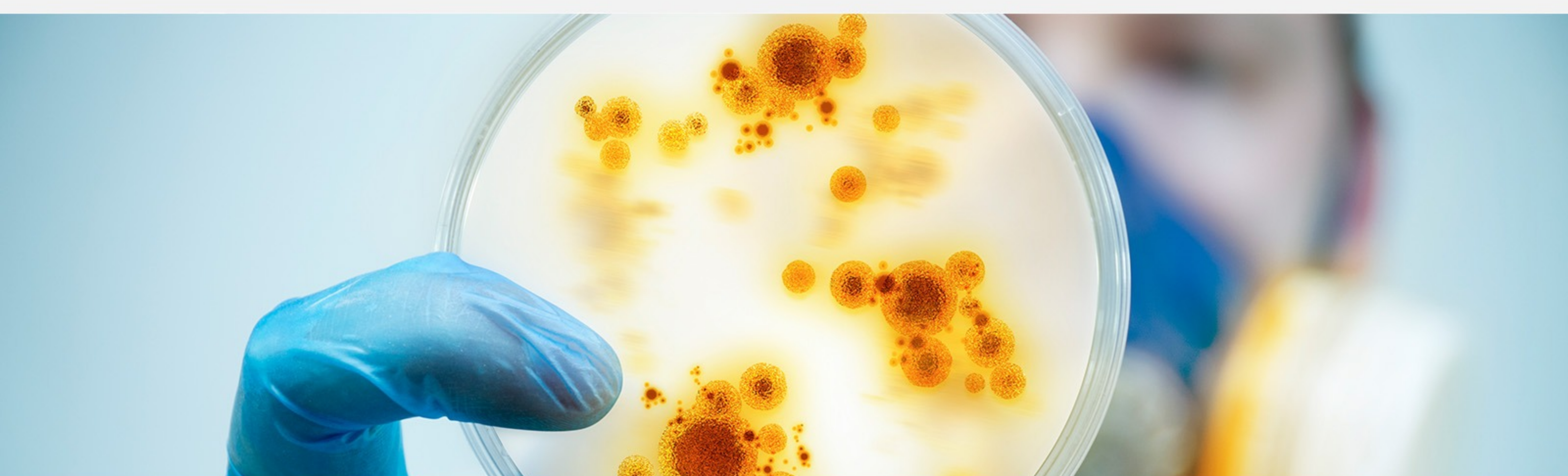


CORE COURSE

The very beginning of the MANNA project



ESRs, partners and project supervisors came together in a remote research station close to Glasgow to discuss the projects, exchange ideas, but in particular to participate in specific lectures in order to connect all the different backgrounds experienced by the ESRs to a level playing field of knowledge



DISCOVER OUR EARLY STAGE RESEARCHERS BACKGROUND



In the new website you will find a specific section in which you will be able to see from where the ESRs came from, what they have studied and in which project they are involved



INTERVIEW CORNER

Don't miss our regular Q&A space



Be sure not to miss our regular interview space. You will learn some interesting behind the scene about ESRs personal life, future objective and much more.

Subscribe to our Newsletter



Subscribe now to our Newsletter if you want to be the first to read the news!
MANNA is already started, and the website will be ready very soon!